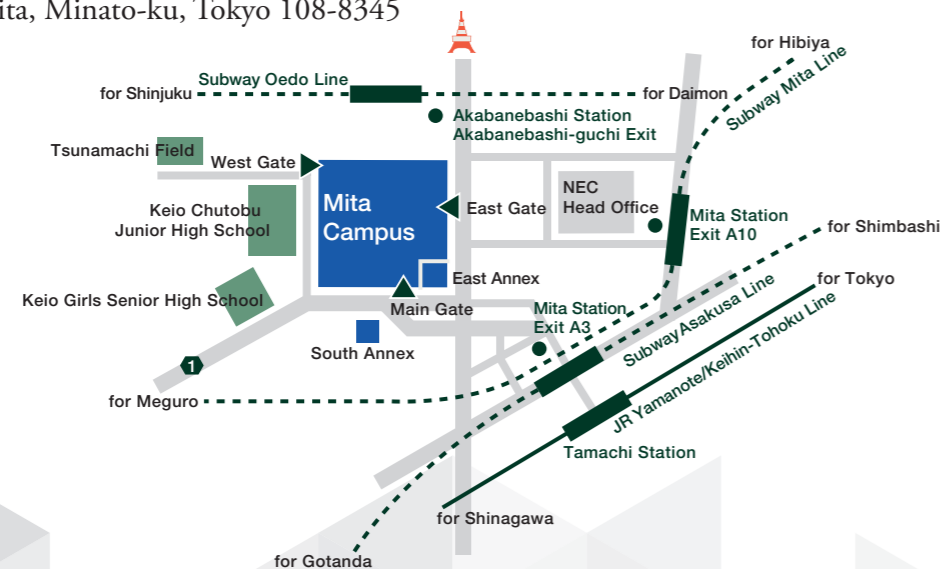


Access and Information

Access

Mita Campus
2-15-45 Mita, Minato-ku, Tokyo 108-8345



Tamachi Station (JR Yamanote Line / JR Keihin Tohoku Line) 8 minutes on foot
Mita Station (Toei Subway Asakusa Line / Toei Subway Mita Line) 7 minutes on foot
Akabanebashi Station (Toei Subway Oedo Line) 8 minutes on foot

Information about Keio University

✕ Faculty of Economics

<https://www.econ.keio.ac.jp>

✕ Admissions Procedures for the PEARL Programme

<https://www.keio.ac.jp/en/admissions/undergraduate/pearl/index.html>

✕ Keio University International Center

<http://www.ic.keio.ac.jp/en/>

✕ Scholarship Information for International Students

http://www.ic.keio.ac.jp/en/life/scholarship/intl_student.html

✕ Housing Information for International Students

http://www.ic.keio.ac.jp/en/life/housing/ryu_boshu.html

✕ Social Media

Facebook

<https://www.facebook.com/KeioPEARL/>

Twitter

<https://twitter.com/keiopearl>

Keio University



Keio University

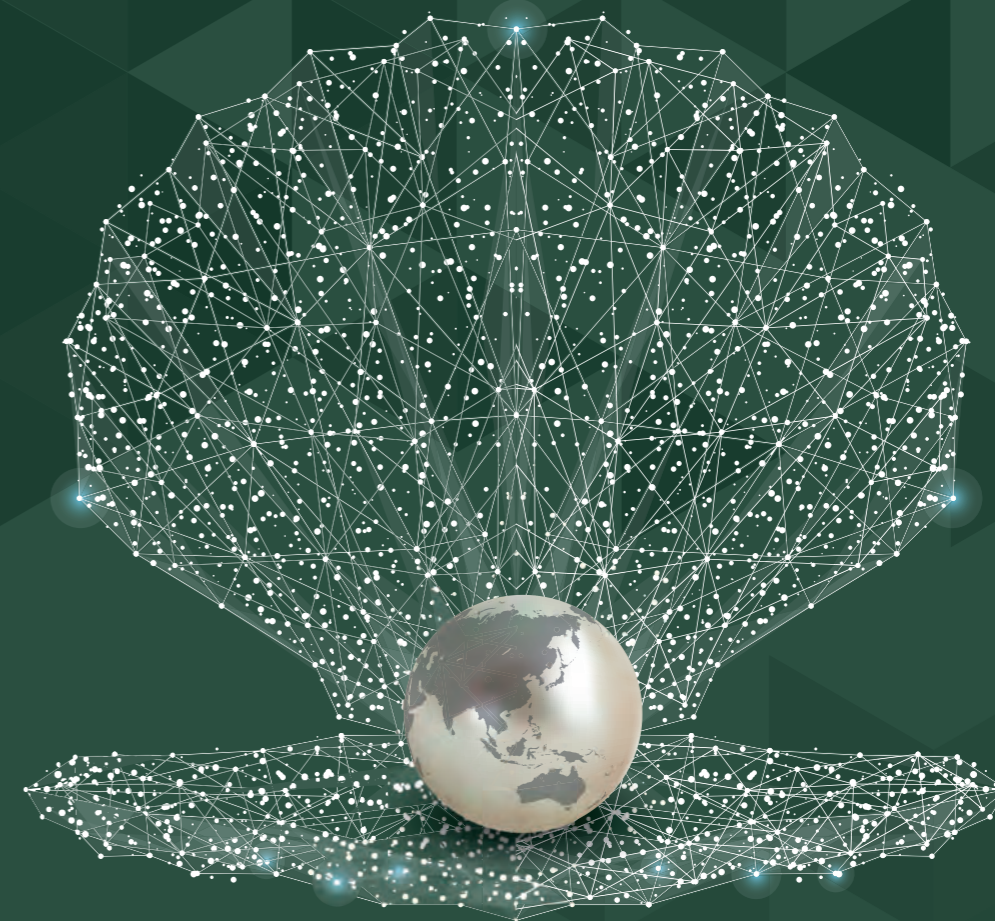
2-15-45 Mita, Minato-ku, Tokyo 108-8345, Japan

www.keio.ac.jp/en/



2021.06 2,400

Grow your wisdom and knowledge
like a pearl developing its beauty and lustre.



PEARL

Learning Economics in English in Japan

Faculty of Economics



Keio University



PEARL

Learning Economics in English in JAPAN

Programme in Economics for Alliances, Research and Leadership

The PEARL programme aims to develop leaders who can build economic alliances in Asia and beyond, and who will make the Faculty of Economics at Keio a global hub of education and research partnerships.

By following Keio's tradition of "han-gaku, han-kyo" (learning while teaching, teaching while learning), professors and students produce intellectually stimulating research.

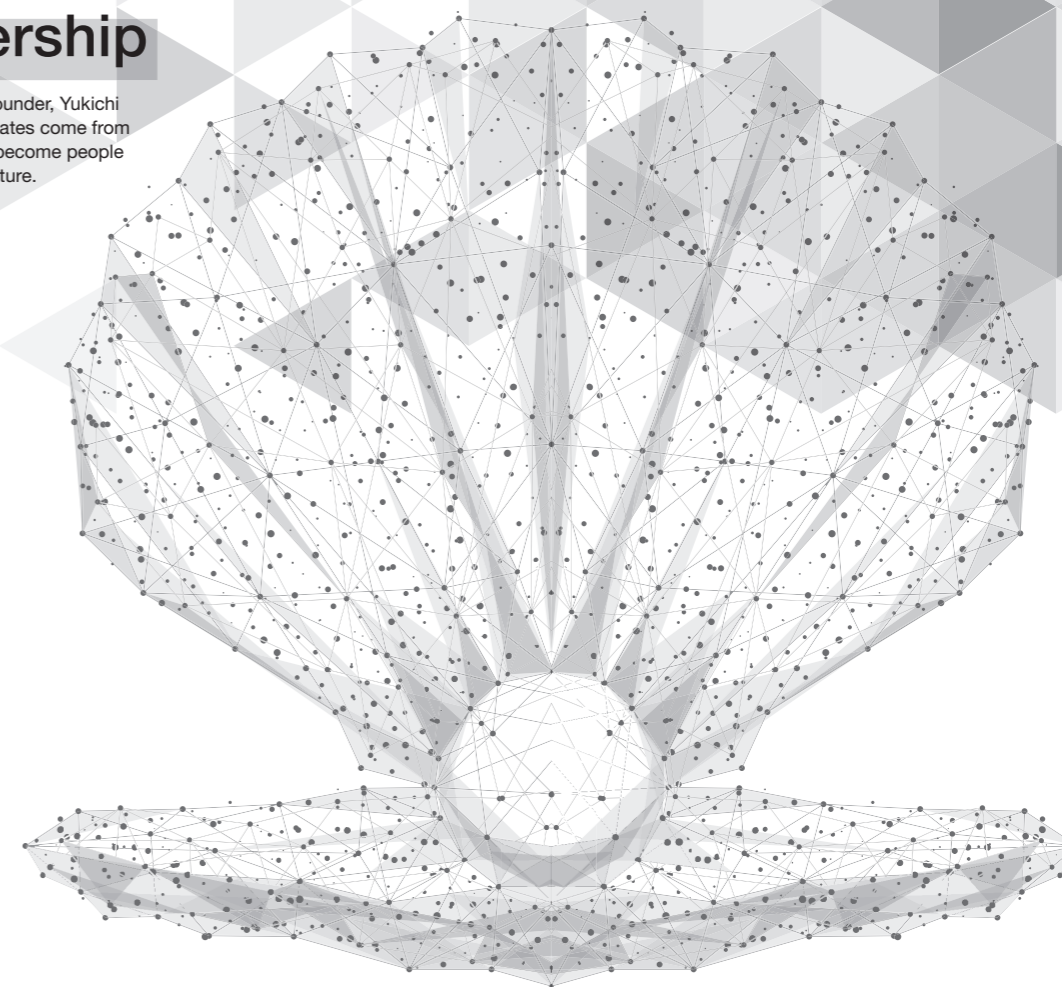
As intended by our founder, Yukichi Fukuzawa, our graduates come from all over the world to become people who will shape the future.

PEARL was founded to foster true global leaders.



Just like a pearl oyster covers a grain of sand with many layers of nacre to create a pearl that grows in beauty and lustre, the name of our programme, PEARL, reflects our goal of nurturing students with keen minds through the highest standard of learning.

By offering a world-class education in advanced economics in English, students from Japan and around the world can interact and learn together. PEARL is designed to foster the global leaders of tomorrow.



1

All-English Programme that starts in September

Admission to PEARL is limited to 100 students each year. PEARL is an all-English four-year elite BA programme in economics with an academic year that begins in September.

2

Learning the essentials of economics

The first two years of the PEARL programme at our Hiyoshi Campus are designed to provide students with a strong grounding in the fundamental knowledge necessary to pursue their individual paths of study. Students then go on to study at our Mita campus for their third and fourth years to develop their expertise and broaden their learning.

3

A research system that enables you to deepen your understanding of your field of interest

The pursuit of small-group education is a feature of Keio University. In the Faculty of Economics, small group education includes Research Seminars and Independent Research Projects where you can devote yourself to completing a research thesis on your topic of interest.

4

Fulfilling options for studying abroad

We have a wide variety of study abroad programmes, such as the Double Degree Programme where students are awarded degrees from both the Faculty of Economics at Keio and a partner university by satisfying the graduation requirements of both institutions, and BA/MA Five-Year Programme where students are awarded a bachelor's degree from Keio and a master's degree from a partner university. Also, we offer faculty-wide exchange programmes which provide students with the opportunity to study at an overseas university for one or two semesters.

5

BA/MA Five Year Programmes

The Faculty of Economics has agreements with HEC Paris (France), Sciences Po (France), Bocconi University (Italy), the University of Cologne (Germany), Brandeis University (USA) and the Stevens Institute of Technology (USA) for BA/MA Five-Year Programmes. Students of the Faculty of Economics' PEARL programme who satisfy the graduation requirements are awarded a BA in Economics degree from Keio and a master's degree from a partner university.

6

Campus life in Tokyo and Kanagawa

Japan is one of the safest countries in the world. Tokyo and Kanagawa, located in central Japan, are part of a large metropolitan area that has easy access to many places not only in Japan, but also in the rest of Asia. The Faculty of Economics at Keio has campuses in both Tokyo and Kanagawa, and its students benefit from the convenience of these urban areas.



“Economics” in Japan started at Keio University

福澤諭吉

A Pioneer of Economic Research in Japan

The early Meiji Period was a time of change in Japan. Yukichi Fukuzawa was a pioneer of the new era and wrote a book titled “Gakumon no Sususme (An Encouragement of Learning)”, which extolled the importance of freedom, equality, and human rights. The Faculty of Economics established in Keio University, which was founded by Fukuzawa, was the first Faculty of Economics in Japan. The Faculty is both innovative and traditional, and is one of Japan's leading economics departments for theoretical and empirical economics research.

経世済民

The birthplace of the modern term “economy”

Yukichi Fukuzawa was the first person to translate the English word “economy” as the Japanese word “経済” (keizai). The origin of “経済” (keizai) is the term “経世済民” (keisei saimin), which consists of the two expressions meaning “ordering the social world”, “経世” (keisei), and “saving the people”, “済民” (saimin). The Faculty of Economics considers that economics should be about the application of knowledge and skills to society.



The portrait of Yukichi Fukuzawa appears on the 10,000 yen bill, Japan's highest value banknote. This indicates that Fukuzawa is recognised as a pioneer of educational innovation because he introduced economics to Japan.

Japan's first private institution of higher education

Keio University has its roots in “Keio Gijuku”, a school for Dutch studies founded in 1858 by Yukichi Fukuzawa. Fukuzawa put a new twist on the old word “gijuku”, which he used to refer to schools modelled after the British public school system.

One of Japan's best universities

According to the QS World University Rankings 2021 and THE World Reputation Rankings 2020, Keio ranks in the top 1% (top200) universities in the world.

Independence and self-respect

“Whosoever perfectly realizes the principle of Independence, both of Mind and Body, and, paying due respect to his own person, preserves his dignity unblemished him we call a man of independence and self-respect.” – from The Keiogijuku University: A Brief Account of Its History Aims and Equipment. The true spirit of Keio University is one of independence and self-respect, protecting the dignity of oneself and others, and acting with discretion and responsibility in every matter.

Many well-known alumni

Keio University boasts the largest number of presidents of listed companies in Japan among its alumni, including the president of Toyota Motor Corporation. Our alumni also include many public figures in the political world, such as former prime ministers, and we continue to produce leaders who shape Japan on the global stage.

Learning while teaching, teaching while learning

The principle of “han-gaku, han-kyo” (learning while teaching, teaching while learning) unites members of the Keio family and makes no distinction between students and professors, or between the learned and the learner. From Keio's humble beginnings, there has always been a spirit that students and professors alike have the capacity to both teach and learn together.

Keio University, which combines tradition and innovation, is one of Japan's most prestigious universities.



PEARL

FACULTY OF ECONOMICS, KEIO UNIVERSITY

In the PEARL curriculum, you will experience a world-class education and study the most advanced areas of economics.

Economics in the PEARL curriculum is not just research in economics. It is a training that teaches the value of good governance and strong leadership, and nurtures true global leaders. In the PEARL curriculum, general education and the basics of Economics are taught at the Hiyoshi Campus for the first two years, and then students can choose from subjects that cover 10 specialised economics disciplines at the Mita Campus for their final two years.

 U.S.A / University of California



©2015 University of California

 Italy / Università Bocconi



©Università Bocconi

 Taiwan / NTU



Academic Year Starts in September

Double Degree

Students who satisfy the graduation requirements of two universities will be awarded two Bachelor's degrees; one from Keio University and one from a partner university.

KEIO Economics

All students study at our two campuses. In our Student Exchange Programme, students have various choices for the host universities, and the duration and timing of their exchange. We have agreements with a total of 33 universities in North America, Europe and Asia (as of September, 2021).

BA/MA 5 Year Programme

Students who satisfy the graduation requirements will be awarded a Bachelor of Arts in Economics from Keio and a master's degree from a partner University in five years.

International Center for Education in Islamic Finance (INCEIF)*

We send students to the INCEIF in order to receive specialized training on Islamic Finance to develop internationalization of Islamic Finance as a bridge between Japan and Islamic Finance industry.
*NOTE: This is not a student exchange program.

Bachelor's Programme



©HEC Paris



©Martin Argyroglo Sciences Po



©Martin Argyroglo Sciences Po



Enjoy a fulfilling campus life in Japan, a beautiful country with four seasons.

The cost of living in Japan is surprisingly reasonable, both in terms of living expenses and tuition. Japan's transportation system is excellent and provides easy accessibility to just about anywhere. Being able to experience Japan's four beautiful seasons and its rich culture in a safe environment is sure to broaden your horizons in a way that complements your academic achievements.

Academic fees:	12,070 USD*
Personal Expenses:	370 USD
Rent:	550 USD+
Food expenses:	240 USD

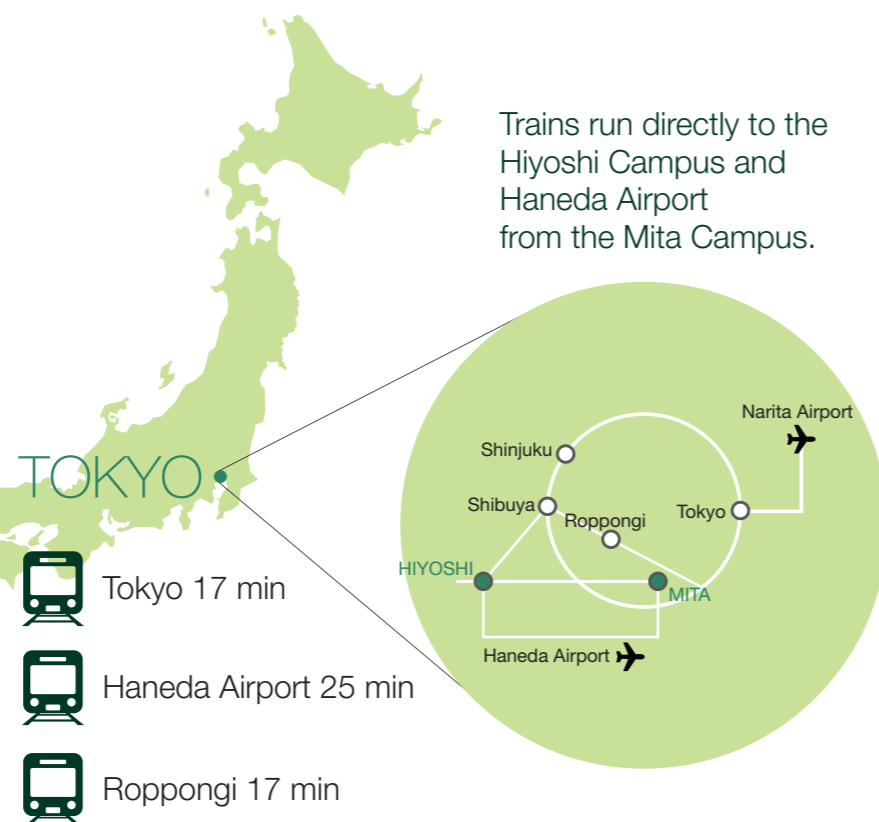
*(per academic year)

You might expect that Tokyo is a very expensive city, but tuition at Keio is rather inexpensive compared with other world-famous universities. In addition, Keio's tuition is a flat-rate fee, so that domestic and international students pay the same amount. In contrast, many universities impose an extra fee for international students. Because the tuition fees for domestic and international students are the same, you may feel that you are getting a good deal.



Location

Students in the Faculty of Economics study at two campuses in the greater Tokyo area; the Mita Campus and the Hiyoshi Campus. It only takes 17 minutes to get to the Mita Campus from Tokyo Station, and Hiyoshi Campus is about 35 minutes away from the Mita Campus. Tokyo Metro or JR Line, and city buses are available for transportation.



Experience a multicultural environment in the PEARL programme

The diverse backgrounds of students in the PEARL programme provide a unique multicultural environment in which PEARL students learn to respect and understand different cultures. These experiences broaden the experience of true global leaders.



Studying at PEARL made me realize that economics plays a huge role in the activities of my daily life, much more than I imagined; from the type of education I received from the past to my consumption behavior today, and healthcare I might receive in the future. PEARL has provided me not only the important foundational subjects to become an economist, but also several opportunities from other prestigious schools around the world to elevate my university experience. Aside from economic science, I also feel incredibly grateful for a wide variety of other relevant academic fields that I get to explore. Simultaneously, PEARL has driven me to become well-rounded global citizens to tackle the issues of our society throughout my past 2 years of experience here.

Saint Hnin Mon (snow)



PEARL is not only a lively English-medium undergraduate program but it is also a useful channel for international students like me to connect with the greater variety of resources offered by the entire Keio University. PEARL as a channel offers connections with Keio university's physical education programs, extracurricular activities, partner institutions and so much more. These kinds of connections benefited me enormously and I believe that it will continue to benefit future students as well.

Ruochen Shi



The PEARL program has supported me in not only pushing my academic boundaries, but also in exploring my surroundings and engaging with an international community. Although it's in its nascent years, the program has evolved and has a curriculum that provides the best of university life in the heart of Tokyo and Yokohama. For me, it has been a nurturing environment since there is enough liberty to choose your own path along with the guidance of the wonderful faculty. The PEARL program at Keio University encourages its students to think, innovate, and become true leaders in today's international society!

Anushree Goyal



I think that what sets PEARL apart from any other program in Japan is the superb opportunity for you to become an excellent leader. Despite rigorous academic standards, PEARL environment acknowledges not only your academic curiosity but your various capacities as an intellect. The diverse and close-knit student community allows all 100 of us to stimulate each other's minds and develop as individuals with a broad view of life.

Kengo Matoba

4 big city comparison

University, City	Keio, Tokyo	LSE, London	NYU, New York	NUS, Singapore
Tuition and fees (per academic year) Overseas Student	12,070 _{USD}	28,123 _{USD}	53,308 _{USD}	22,359 _{USD}
< Home Student >	< 12,070 _{USD} >	< 12,060 _{USD} >	< 53,308 _{USD} >	< 6,142 _{USD} >
Cost of living (per month) housing: on-campus	TOKYO 1,160 _{+USD}	LONDON 1,530 _{+USD}	NEW YORK 2,590 _{USD}	SINGAPORE 974 _{+USD}

The cost of living in Tokyo is quite reasonable compared with other large cities. There are many discount shops and low-cost supermarkets in Tokyo which enable you to live comfortably while keeping your food and living expenses low.



Application and Enrollment Process

Website for Admissions Procedures for the PEARL Programme

This website contains all the necessary information on the admissions procedures including the eligibility requirements and the application documents.

<https://www.keio.ac.jp/en/admissions/undergraduate/pearl/>

Information in this brochure is subject to change without notice. Please check the website for updated and detailed information.

Application Schedule

Between October and April, applications will be accepted in three periods.

Step 1

Check Your Eligibility

Step 2

Check the Application Documents

1

Application Form

2

Standardised Test Scores: International Baccalaureate (IB), SAT, or ACT

3

TOEFL iBT and/or IELTS Scores

4

Written Statement of the Applicant's Academic and Future Goals

5

Letter(s) of Reference

6

High School Graduation Certificate (or a document certifying expected graduation)

7

High School Academic Transcripts

8

Document Confirming Applicant's Identity

9

SAT Subject Test Scores (optional)

10

Other optional materials, including standardised national examination scores

Step 3

Send the Application Documents by Post

Step 4

Complete the Online Application

Step 5

Pay the Application Fee

Step 6

Check Your Results

Step 7

Carry Out Enrollment Registration

FAQ

About the Admissions Process

- Q

Which factors are considered in the admissions process?
- A

Admissions decisions are never based on a single factor.
It is important to remember that we review applications holistically.
- Q

Do you favour an IB score over scores for the SAT or ACT tests?
- A

No. The IB, the SAT, and the ACT tests are all treated equally.
- Q

Are there minimum required standardised test scores?
- A

No. There are no “cut-off” scores.
- Q

Will I need to sit an interview?
- A

No. Interviews are not part of the PEARL programme admissions/selection process.

About the Curriculum

- Q

How can I apply to PEARL and the Double Degree Programme with Sciences Po?
- A

Once an applicant is admitted to PEARL, he/she can apply to the Double Degree Programme with Sciences Po.
To join the Double Degree Programme in the same year as entering PEARL, applicants must apply during the first and second application periods. Applicants who are admitted to PEARL during the third application period can apply to the Double Degree Programme in the following year.

After Graduation

- Q

Where do PEARL students find jobs?
- A

Our first PEARL students graduated in September 2020. According to surveys of these students and their professors conducted by the Faculty of Economics, students found jobs in both Japanese firms and international firms. Some of the Japanese firms include; CyberAgent, Inc., Daikin Industries, Ltd., Hitachi, Ltd., Indeed Japan, Kao Corporation, Mitsubishi UFJ Financial Group, Inc., Mizuho Bank, Ltd., Mizuho Securities Co., Ltd., Nippon Express Co., Ltd., Nomura Research Institute, Ltd., Oriental Land Co., Ltd., Rakuten, Inc., RGF Professional Recruitment Japan, SoftBank Corp., Sumitomo Corporation, Sumitomo Mitsui Banking Corporation, Tokyo Broadcasting System Television, Inc., TV Asahi Corporation and ZUU Co., Ltd.; and some of the international firms include: Amazon Japan, BlackRock Japan Co., Ltd., Bloomberg, Boston Consulting Group, Colliers International Japan, Credit Suisse, Deloitte Touche Tohmatsu, EY Strategy and Consulting Co., Ltd., Goldman Sachs, IBM Japan, Loewe and Morgan Stanley.
- Q

Do PEARL students go to graduate school?
- A

Compared to Type A/B students in the Faculty's undergraduate programme taught in Japanese, a larger proportion of PEARL students go on to graduate school. PEARL students have either joined one of our 5 year BA/MA programmes, or gone on to graduate school after graduating from Keio. According to surveys conducted by the Faculty of Economics, some students in latter group have already been accepted into schools including Columbia Business School (NY, US), Institut d'Etudes Politiques de Paris (Sciences Po , Paris, France), Institute Francais de la Mode (Paris, France), London School of Economics and Political Science (LSE) (London, UK), Parsons School of Design (NY, US), Queen's University (Kingston, Canada) or are currently studying in the Graduate School of Economics at Keio.